

# Turning Point Center of Chittenden County

*A Place to Call Home*

OUR CAPITAL CAMPAIGN



## Goal of Our Campaign

We are the largest peer run recovery center in the state of Vermont. On average we have between 2,500 and 3,000 guest visits per month. We provide a safe and drug free environment for those in recovery from alcohol and/or drug addiction.

Our mission is to help support individuals and their families in ways that respect the uniqueness of each person who walks through our doors.

Over the years The Turning Point Center of Chittenden County has

added health and wellness programs aimed at exposing our guests to substance dependence alternatives. Programs such as Recovery Yoga Sessions, Recovery Coaching, Acupuncture, Meditation, Reiki, Karate, Tai Chi and other healing practices, as well as being home to over one hundred 12-step meetings per month.

Of late, we are doing more with family members from support groups, recovery peer support workers, recovery coaches, providing space for new

moms and their babies, and outsourcing our staff to other agencies to bring the “lived experience” of support to where people in recovery are located.

We know, because we’ve experienced the results, that the more dynamic a center we become the more opportunity for someone in recovery to find an activity or meeting that connects with their recovery path.

***“The Turning Point Center is a ‘port in the storm’ for many of us...a place to congregate, share, heal, learn and laugh. Those in recovery who are looking for appropriate people, places and things would do well to experience the Turning Point.”***

*- Jim W.*

## Our Mission

The Turning Point Center of Chittenden County is a dedicated, compassionate recovery community that provides support services in a safe, substance-free environment for individuals and families seeking self-discovery and sustained recovery.

## WHERE WE ARE TODAY

- > **Open every day of the year**
- > **Over \$100,000 (if we paid \$12 an hour) worth of peer volunteering a year**
- > **Currently with an at-will lease**
- > **Monthly rent is \$3,750**
- > **We have an average of 2,500 guest visits per month**
- > **Vibrant Recovery Coaching Program**
- > **Over 150 12-step meetings and wellness activities per month**

# A Place to Call Home





## OUR CAPITAL CAMPAIGN

For the past 8 years, our home at 191 Bank Street in downtown Burlington has been good to us, providing an open and welcoming space for people from all walks of life living their days through recovery.

However as The Turning Point Center of Chittenden County has grown, and the face and needs of recovery have evolved, our facility struggles to keep pace with offering staff and guests the most productive and fruitful environment.

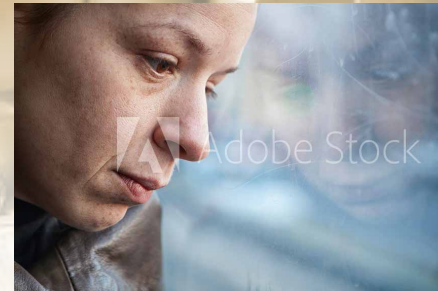
The space itself, while conveniently open for our peer recovery support hours, contain only 2 meeting spaces. As such, maintaining necessary levels of privacy is

challenging during concurrent meetings and activities. These same two meeting rooms also function as our fitness space, library, and soon, a new mom's in recovery space for mothers and their babies. Additionally, with only 4 offices, we are deficient on office space, two of which are unheated.

Of most concern, our landlord is unwilling to extend us a lease beyond our current month to month rent arrangement, leaving us extremely

vulnerable should we be asked to leave on short notice.

Through much discussion and evaluation of options, The Turning Point Center of Chittenden County management and the Board reason that owning a property will eliminate the specter of being asked to leave, better meet our guests needs, and allow us to broaden our offerings to insure a state-of-the-art peer run recovery center for all Chittenden County residents.



## Campaign Goal

Being centrally located to services and transportation allows us to refer guests to various agencies who can address unmet needs of our guests. Close partners include, Howard Services including Act 1, the Church Street Workers and Safe Recovery, Community Health Center, Drug and Mental Health Courts, COTS, Vocational Rehabilitation, Day 1, CVOEO, Mercy Connections among others.

Therefore our goal is to purchase a property in the downtown Burlington area that physically and logistically meets our needs.

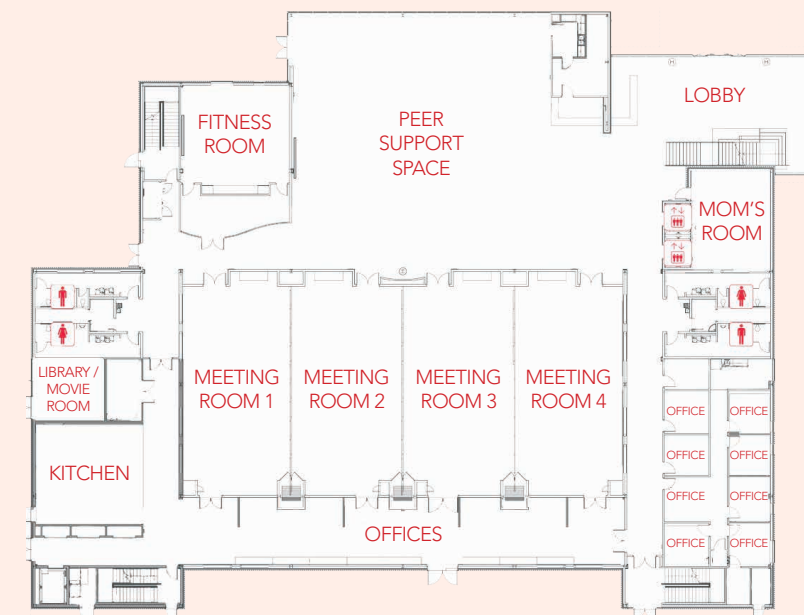
Achieving this goal starts with raising at least \$500,000 to use as a down payment. Additional expenses will include: fit-up and renovations, moving expenses, and re-branding the Center. The general price for a downtown building for the size we envision is approximately \$1,000,000.



## WHAT OUR RECOVERY CENTER COULD LOOK LIKE

The following floorplan is a rendering of what the new Turning Point Center of Chittenden County could look like:

### POSSIBILITIES FOR A DYNAMIC RECOVERY CENTER



- > Meeting Rooms (4)
- > Fitness room
- > Library/Movie Room
- > Staff Offices (7)
- > New Mom's & Infant Room
- > Reception Area
- > Community Partner Area (Act 1, ...)
- > Kitchen
- > Bathrooms
- > Recovery Coaching/ Sponsor meeting rooms (3)
- > Open Area for peer support



## WHY NOW?

In a word... relevance. There's no denying that substance abuse and addiction are conditions challenging the lives of far too many people in Vermont and throughout America. The need for avenues of recovery has never been higher.

Recovery is the ray of hope and desired outcome of transitioning people beyond addiction. The Turning Point Center of Chittenden County does the hard and attentive work every day that lift people up, build supportive community, and influence positive alternatives to addiction. We provide the critical resources and support that make recovery possible and successful. The problem would only be bigger if not for the work we do.



***"Recovery from substance dependence is a voluntarily maintained lifestyle characterized by sobriety, personal health, and citizenship."*** - Betty Ford Clinic



## WHERE DO YOU FIT IN?

As a Capital Campaign Donor, you become a very big part of the solution to a very big problem. Your donation also makes you a vital part of the The Turning Point Center community – and endless studies have proven that people are positively affected when part of a positive community. That's where you come in.

If all of us are only six degrees of separation away from one another, the

people who use our center are in some way, either directly or indirectly, your family, relatives, co-workers, customers, co-worshippers, business partners, teammates, partners, or neighbors. We are all touched by addiction so when you give to support the work of this center, you are giving to your own.

From the bottom of the hearts of the management, staff, and guests... we thank you for your support.



#### CAPITAL CAMPAIGN COMMITTEE

Craig Weatherly, *Board President and Chair*

Patti Fisher, MD, *Board Member*

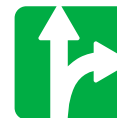
Chuck Hafter, *Board Vice-President*

Cathy Aikman, *Board Member*

Laurie McKittrick

Rik Fenton, *Development Coordinator*

Gary De Carolis, *Executive Director*



**Turning Point Center**  
OF CHITTENDEN COUNTY

For more information please contact:

Gary De Carolis, Executive Director

191 Bank Street, Suite 200

Burlington, VT 05401

802-861-3150

[garyd@turningpointcentervt.org](mailto:garyd@turningpointcentervt.org)