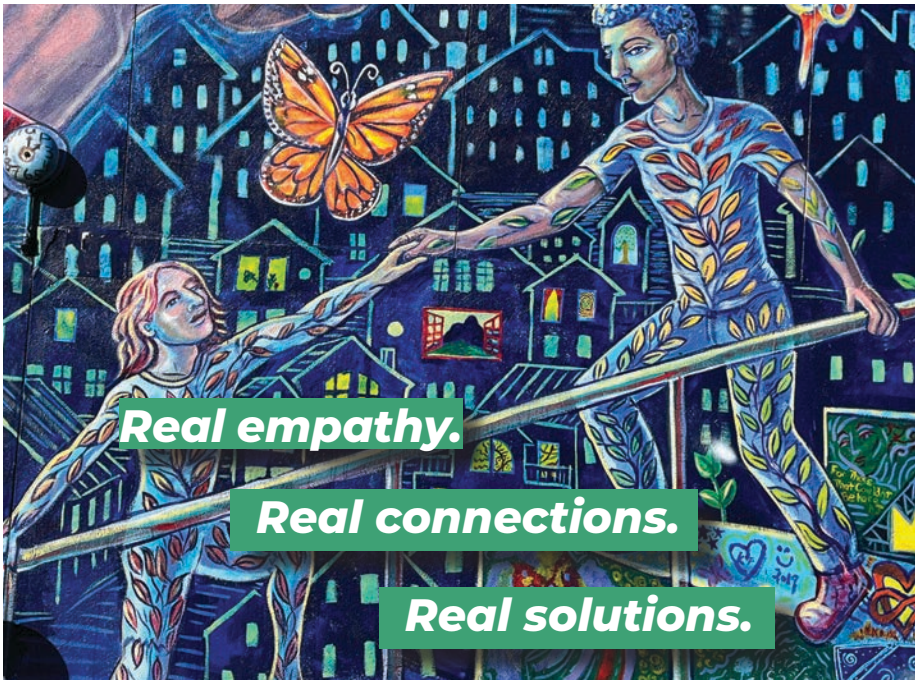


Turning Point Center
OF CHITTENDEN COUNTY



STAND UP

for Recovery



Real empathy.

Real connections.

Real solutions.

DEAR FRIENDS,

Welcome to the revival of our comedy fundraiser, Stand Up for Recovery! This evening would not be possible without our many generous sponsors, especially our headline sponsor, Acabay, Inc. and generous support from NorthCountry Federal Credit Union.

Thank you for joining us, live and in-person, to stand up for our incredible shared cause: recovery from addiction, substance use disorders, and the isolation that addiction breeds. Tonight we celebrate connection, community, compassion, and understanding... all of which is found every day at the Turning Point Center.

Addiction appears to be worsening—in the country and in Chittenden County—and the need for services in our community continues to grow. This year, we are seeing four times the number of individuals for recovery coaching that we saw four years ago. **Your generosity as a friend and supporter of the Turning Point Center has helped us to meet this need.** Your contributions have a direct impact on our mission and without your support we could not continue to rise and meet the needs of those who struggle with this disease.

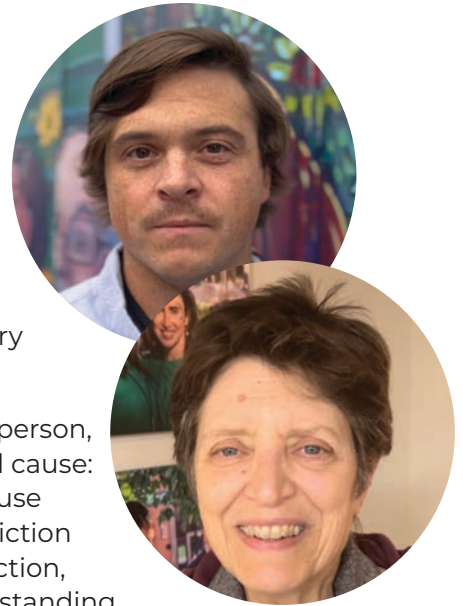
Please visit our silent auction. There are items on view in the lobby. More information—including the link to bid until midnight tonight!—can be found on the following pages. All items and services are generously donated by local artists and businesses. All proceeds benefit the Turning Point Center, so please bid high!

Now, let's laugh and celebrate community!

With sincere gratitude and appreciation to you all,



Cam Lauf
Executive Director



Rosi Gowdey
President, Board of Directors

STAND UP FOR RECOVERY

THURSDAY, JUNE 8, 2023

FEATURING

Max Higgins
Liam Welsh
Tracy Dolan
Tina Friml

THANK YOU TO OUR EVENT COMMITTEE

Cathy Aikman
Tracy Dolan
Jonathan Goffe
Rose Gowdey
Sam Hemingway
Cameron Lauf
Kim Norman Mercer
Krista Marzewski
Eric Sokolowski
Craig Weatherly

SPECIAL THANKS TO

HOST SPONSOR - Main Street Landing
PRINT SPONSOR - Paw Print & Mail
TECHNICAL SUPPORT - Vermont Comedy Club
and TRACY DOLAN for providing talent
(her own and her friends!)



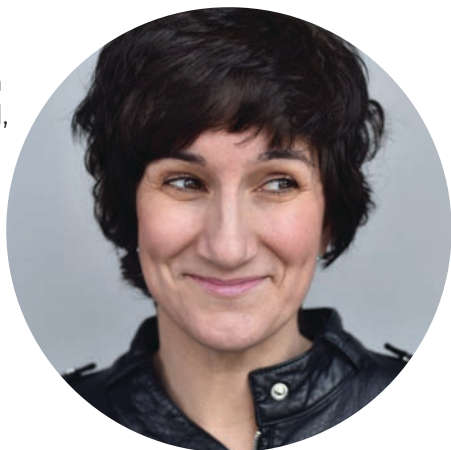
TALENT BIOS

TINA FRIML is a New York City-Based comedian originally from Burlington, Vermont. She has appeared On Comedy Central, The Drew Barrymore Show, and at the 2019 Just For Laughs Festival as a selected performer in the acclaimed New Faces series.

Having began her career in Vermont, she was featured on VPR, WPTZ, Seven Days, and the cover of The Burlington Free Press. She holds a 2019 Seven Daysies Award for 'best standup comic' in Vermont and was crowned the 2018 winner of 'Vermont's Funniest Comedian' at the Vermont Comedy Club. Using animated optimism on her own physical disability, yet fearless honesty about the social assumptions that come with it, Tina befriends audiences of all sorts with her eccentric style, off-beat mind, and unexpected philosophy acquired through her unique circumstances. www.TinaFriml.com



TRACY DOLAN has been featured in Boston's Women in Comedy Festival, New York City's She Devil Comedy Festival and the Green Mountain Comedy Festival. She performs regularly at the Vermont Comedy Club and has opened for national acts including Gary Gulman, Hari Kondabolu, and SNL alums Tim Meadows and Jim Bruer.



TALENT BIOS

(continued)

MAX HIGGINS is a comedian based in Burlington, VT. Max's sharp wit and ability to charm the pants off an audience placed them second in the Vermont's Funniest Comedian 2022 competition. You've seen them on Butterboy in Brooklyn, the Rogue Island Comedy Festival, and regularly performing at the Vermont Comedy Club.



LIAM WELSH is a Burlington based stand up comic. He can be seen regularly performing at Vermont Comedy Club, where he has featured for national headliners Michael Rapaport, Jay Jurden, and Janelle James. He also hosts a weekly comedy showcase at Lincoln's in Burlington, called Free Stuff.



TURNING POINT CENTER OF CHITTENDEN COUNTY

A 501(c)(3) nonprofit organization; EIN 04-3682092
179 S. Winooski Ave., Suite 301, Burlington, VT 05401
(802) 861-3150 · www.turningpointcentervt.org



ACABAY INC.

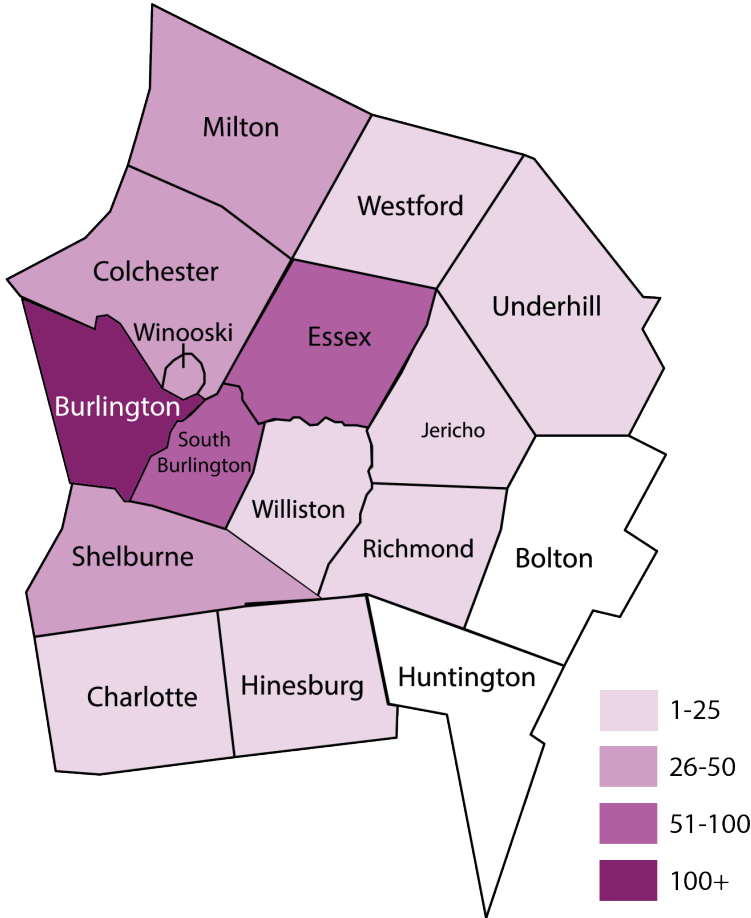
Premier Office Space

***Proud to support the
Turning Point Center of Chittenden County
and the entire recovery community!***



TPCCC SERVES ALL OF CHITTENDEN COUNTY

Turning Point Center of Chittenden County serves people from all over our region. Recovery coaching, for individuals and families, has no barriers. We offer in-person, phone, and video conferencing options to connect with people. Our services are free, accessible, and on-demand.



Participants from each town in Chittenden County

Burlington 357
 Charlotte 7
 Colchester 41
 Essex 75
 Hinesburg 12
 Jericho 8

Milton 39
 Richmond 5
 Shelburne 27
 S. Burlington 58
 St. George 1
 Underhill 3

Westford 4
 Williston 17
 Winooski 49



Community
BANK

Putting our
communities and
customers first.

cbna.com



Member FDIC



CHECK IN

AND CHECK
EVERYTHING
OUT

Burlington, Vermont
hotelvt.com



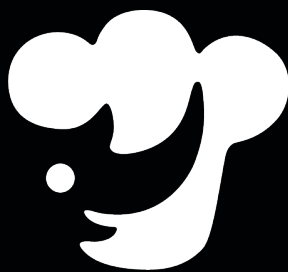
Believe in
tomorrow.
Do good
today.

National Life is
proud to support
our community.



National Life Group® is a trade name of National Life Insurance Company founded in Montpelier, VT in 1848, Life Insurance Company of the Southwest (LSW) chartered in Addison, TX in 1955, and their affiliates. Each company of National Life Group® is solely responsible for its own financial condition and contractual obligations. LSW is not an authorized insurer in New York and does not conduct insurance business in New York.

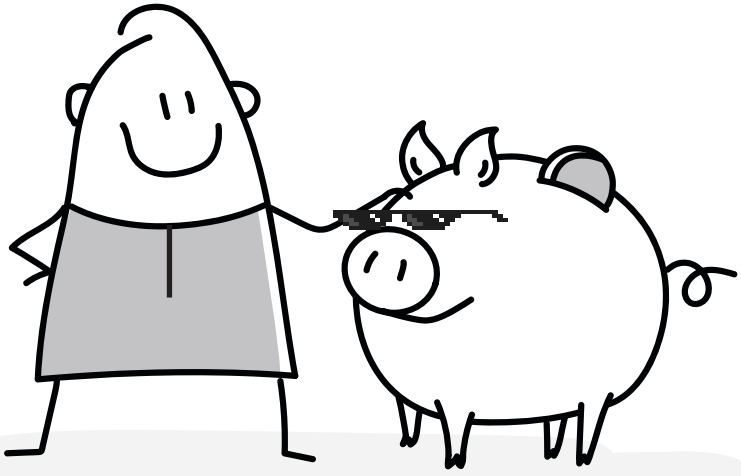
TC131599(0223)3 | Cat No 106577(0523)



rhino
FOODS

PROUD TO SUPPORT
THE TURNING POINT
CENTER AND PEOPLE
IN RECOVERY

Proud to support Turning Point Center of Chittenden County



It's no joke - NorthCountry will work with you to come up with personalized financial solutions. Whether you're looking for a reliable ride, a new place to live, college tuition, rewarding checking accounts, or ways to save, we can help you quickly and affordably.



Visit us online or give us a call:

www.northcountry.org

1 802 657-6847

1 800 660-3258

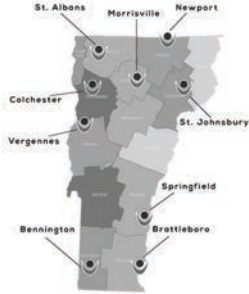


EQUAL HOUSING
LENDER

Insured by NCUA



Outpatient Opioid and Alcohol Addiction Recovery



- ✓ In-person Same Day/Next Day Intake
- ✓ Telehealth Available
- ✓ Substance Use & Mental Health Medications
- ✓ Suboxone, Monthly Shots - Sublocade or Vivitrol
- ✓ Behavioral Counseling
- ✓ Medicaid/Medicare /Most Insurance
- ✓ Hep C Treatment
- ✓ Trauma-Informed Phlebotomy
- ✓ Presumptive & Confirmatory UDS
- ✓ Easy & Efficient Referral Process



Scan to Refer
Someone to
SaVida Health

SAVIDAHEALTH.COM

SUPPORT THE TURNING POINT CENTER OF CHITTENDEN COUNTY

Last year we provided for 878 individuals across all coaching services and hosted over 8,000 daily visits to the recovery center.

The need is increasing and we are meeting the need.

If you'd like to support us with a financial gift, please visit:
turningpointcentervt.org/donate



Danform Shoes is a proud supporter of Turning Point of Chittenden County.



WANT TO VOLUNTEER?

The Turning Point Center of Chittenden County is people-powered!

When you volunteer the effects multiply around you. Besides helping the Center carry out its profoundly life-affirming work, you have the chance to meet new people and expand your recovery network, add to your resume and school applications, and give back to the recovery community.

For more information, email debt@turningpointcentervt.org or call (802) 861-3150

Laughter

can be the Best Medicine

Thank you Turning Point Center of Chittenden County for all you do in the community.

We are proud to stand “up” with you.

— THE —
University of Vermont
MEDICAL CENTER

SILENT AUCTION

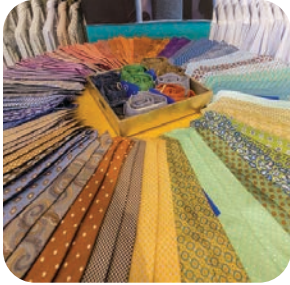
Bid online until midnight tonight (6/8/23) to win amazing artwork, self-care, and gift cards donated by local artists and businesses. All proceeds support the recovery center.



<https://givebutter.com/c/HEGa3K/auction>

DONATIONS GENEROUSLY DONATED BY:

April Cornell	MK Clothing
Bare Medical Spa + Laser Center	Monstream Studios
Bertha Church Intimate Apparel	Nu Chocolat
Bill Reed Voice Studio	PaddleSurf Champlain
Bread & Butter Farm	Petra Cliffs Climbing Center & Mountaineering School
Brian's North End Automotive	Phoenix Books Burlington
Burlington Surf Club	Pingala Cafe & Eatery
Christine Demarais	Rebecca Vaudrien Massage
Clark Art Institute	Sailingglass - Stained Glass Art & Restoration
Community Sailing Center	Shelburne Farms
Danforth Pewter	Shy Guy Gelato
Dostie Bros.	Soapbox Arts
Freeman's Grove Benevolent Society	Sushi Maeda
Generator Makerspace	Talmo Hair Co
Great Harvest Bakery + Café	The Edge Sports & Fitness
Healthy Living Market & Cafe	The Great Escape Room Burlington
Honey Road	The Safety Team
Hot Yoga Burlington Vermont	Tooth Tattoo
Hotel Vermont	Tradewinds Imports
Integrative Consulting, LLC	Twincraft Skincare
Leunig's Bistro & Cafe	Vermont Teddy Bear Factory
Maple Valley Sugarworks	WholeBodyMFR
Marsha Drake Jewelry	Willows Bagels
MASS MoCA	Yankee Tattoo
Massage Journeys	Yoga with Krista
Michael Couture Media	





River Rock Treatment

We are partners in the recovery community, and proud supporting of the Turning Point Center of Chittenden County.

River Rock committed to creating a supportive, impactful and therapeutic community for men and women overcoming substance abuse and mental health disorders.

(888) 308-2624

www.riverrocktreatment.com

OUR MISSION

The Turning Point Center of Chittenden County is a dedicated, compassionate community that provides recovery support services in a safe, substance-free environment for individuals and families on multiple paths to self-discovery and sustained recovery.

We provide programs, services, and a safe, sober environment for people in recovery from drug and alcohol addiction. We also work to destigmatize substance use disorder and alcoholism, and we are very active in our community to build a resilient response to the opioid epidemic.





Turning Point Center
OF CHITTENDEN COUNTY

BOARD OF DIRECTORS

Rosi Gowdey, *President*

Maureen Leahy, *Vice President*

Eric Sokolowski, *Treasurer*

Cyndi Haselton, *Secretary* **Jonathan Goffe**

Sam Hemingway

Bethany Mahler

Scott Pavek

Craig Weatherly

STAFF OF TPCCC

Tara Campbell, CRC, *Emergency Department Recovery Coach*

Michael Couture, CRC, *Emergency Department Recovery Coach*

Chris Hallowell, *Peer Support Specialist*

Heidi Hausler, CRC, *Parents in Recovery Program Coordinator*

Dale Henry, *Peer Support Specialist*

Emily Korkosz, CRC, *Coaching Services Coordinator*

Cam Lauf, CRC, *Executive Director*

Mishka Lord, CRC, *Emergency Department Recovery Coach*

Krista Marzewski, CRC, *Peer Support Team Lead*

Andrew McKinnon, *Weekend Operations Manager*

Kim Norman Mercer, *Director of Marketing & Development*

Amanda Smith, *Peer Support Specialist*

Dan Smith, CRC, *Emergency Department Recovery Coach*

Debra Trueax, CRC, *Administrative Manager*

Chip Viau, CRC, *Emergency Department Recovery Coach*

Olivia Watson, CRC, *Outreach Recovery Coach*

THANK YOU TO OUR GENEROUS SPONSORS!



Burlington Bay Market & Cafe
Champlain Toxicology Lab
Quick Consignment 802
Sana at Stowe
Sheehey Furlong & Behm, PC
Vermont Gas Systems
Working Fields

BlueCross BlueShield of Vermont
Bottom Line Bookkeeping Services, Inc.
Dominion Diagnostics
Peak Outcome