

Turning Point Center
OF CHITTENDEN COUNTY

STAND UP

for Recovery 2024



presented by:

ACABAY INC.
Premier Office Space

CARMEN LAGALA
ASH DIGGS &
TRACY DOLAN

Your support tonight will change a life!

FRIENDS,

As we gather here tonight, we're reminded of the incredible journey we've been through together. With the immense support from our sponsor businesses, community, and especially our headline sponsor, Acabay, Inc., we've been able to grow, expand our services, and meet the increasing demand for recovery services in our community.



The challenges of addiction continue to evolve, and so do we. Over the past year we've witnessed a significant rise in the number of individuals seeking recovery coaching services. In fact, compared to four years ago, we're now serving four times as many people. This is a testament to both the desperate need for assistance and the effectiveness of our programs.

None of this would be possible without your incredible generosity and commitment to our cause. Your compassion and contributions directly impact the lives of those struggling with addiction, providing them with the resources they need to overcome this illness. Your help is life-saving!

Before we dive into the laughter and festivities, we invite you to explore our silent auction. With items generously donated by local artists and businesses, every bid you make helps further our mission. So, let's bid high and help the Turning Point Center!

Tonight, while we come together to laugh and celebrate community, let's also reflect on the profound impact we bring to the lives of so many. Thank you for being an integral part of our journey.

With heartfelt gratitude,

Cam Lauf,

Executive Director

Maureen Leahy,

President, Board of Directors

STAND UP FOR RECOVERY

THURSDAY, JUNE 6, 2024

FEATURING

Carmen LaGala

Ash Diggs

Tracy Dolan

THANK YOU TO OUR EVENT COMMITTEE

Cathy Aikman

Tracy Dolan

Jonathan Goffe

Rose Gowdey

Sam Hemingway

Cameron Lauf

Christie Holmes

Krista Marzewski

Timothy Stevens

Eric Sokolowski

Craig Weatherly

SPECIAL THANKS TO

HOST SPONSOR - Main Street Landing

PRINT SPONSOR - Paw Print & Mail

TALENT & SHOW PRODUCTION - Tracy Dolan



TALENT BIOS

CARMEN LAGALA

is the kind of comic you'd have a wild late-night conversation with, Carmen's humor leaves no topic off-limits. Carmen is a formerly shy Vermont collegiate hall of fame athlete who moved to New York City a decade ago for stand-up. You may have seen her doing clean material on The Late Show with Stephen Colbert, or being absolutely filthy headlining clubs and festivals around the country.



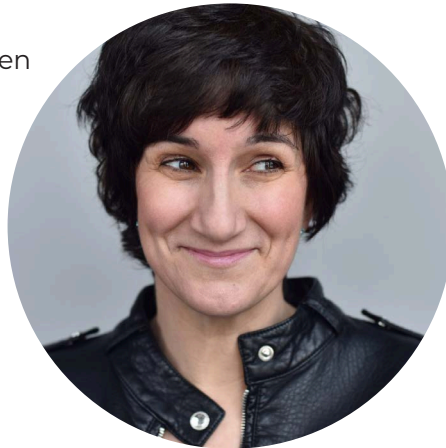
ASH DIGGS

is a Brooklyn-based comedian who has been featured on Means TV, is an inaugural faculty member of The Second City NY, and has performed in festivals across the country, earning the right to open for acclaimed comedians as Ilana Glazer, Tim Meadows, Joyelle Johnson, Theo Von, and more. He's been telling jokes for 8 years and will continue to do so as long as you let him.



TRACY DOLAN

has been featured in Boston's Women in Comedy Festival, New York City's She Devil Comedy Festival and the Green Mountain Comedy Festival. She performs regularly at the Vermont Comedy Club and has opened for national acts including Gary Gulman, Hari Kondabolu, and SNL alums Tim Meadows and Jim Bruer.



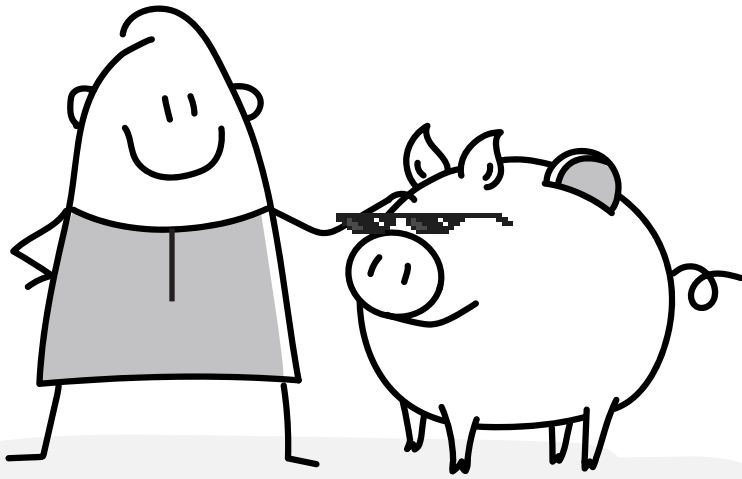
Gratitude abounds as we extend our heartfelt appreciation to

ACABAY INC.
Premier Office Space

for their generous contribution, which uplifts and sustains the vital work of the Turning Point Center of Chittenden County. Your noble support fortifies the very foundation of our mission, fostering hope and resilience within the recovery community.

Thank you for supporting our recovery community.

Proud to support Turning Point Center of Chittenden County



It's no joke – NorthCountry will work with you to come up with personalized financial solutions. Whether you're looking for a reliable ride, a new place to live, college tuition, rewarding checking accounts, or ways to save, we can help you quickly and affordably.



Visit us online or give us a call:

www.northcountry.org

1 802 657-6847

1 800 660-3258



COMPASSIONATE OPIOID & ALCOHOL RECOVERY

NEW
SOUTH BURLINGTON CENTER

Open 5 Days

366 Dorset St, Suite 20
802.448.5072

-
- ✓ In-person Care/Counseling
 - ✓ Walk-in for Same-Day Appointment
 - ✓ Long-Lasting Injectable Medications
 - ✓ Accepting Medicaid, Medicare, Most Insurance

SILENT AUCTION

Bid online until noon on (6/7/24) to win amazing artwork, self-care, and gift cards donated by local artists and businesses. All proceeds support the recovery center.

<https://givebutter.com/c/aUUflG>



GENEROUSLY DONATED BY:

- | | |
|---------------------------------|-----------------------------|
| A Single Pebble | Queen City Yoga & Fitness |
| Bare Medical Spa + Laser Center | Sangha Studio |
| Bertha Church Intimate Apparel | Shy Guy Gelato |
| Bradford Portraits | Sligh Woodworking |
| Brian's North End Automotive | Specs Cafe |
| Burlington Surf Club | Stones Throw |
| City Market | The Edge Sports & Fitness |
| Danforth Pewter | The Spot |
| Dr. Allen Berger | The Safety Team |
| Green Mountain Ashtanga | Tooth Tattoo |
| Heat of Gold | Tree House Hardwoods & Mill |
| Honey Road | Twincraft Skincare |
| Hot Yoga Burlington Vermont | Vermont Gem Labs |
| Hotel Vermont | Vermont Teddy Bear Factory |
| Imperial Barbershop | Waterworks Food + Drink |
| Jr's Williston & Sidebar | WholeBodyMFR |
| Leunig's Bistro & Cafe | Willows Bagels |
| Michael Couture Media | Wilson House Inn |
| Nu Chocolat | Yoga with Krista |
| Paddle Surf Champlain | |
| Pingala Cafe & Eatery | |



TURNING POINT CENTER OF CHITTENDEN COUNTY

A 501(c)(3) nonprofit organization; EIN 04-3682092
179 S. Winooski Ave., Suite 301, Burlington, VT 05401
(802) 861-3150 · www.turningpointcentervt.org



Valley Vista is a trusted medical detox and drug & alcohol rehab center in Vermont that has been guiding clients on a path toward healing and self-discovery for two decades.

Call 802-222-5201 Email: info@valleyvistarecovery.com
www.valleyvistarecovery.com

OUR MISSION

The Turning Point Center of Chittenden County is a dedicated, compassionate community that provides recovery support services in a safe, substance-free environment for individuals and families on multiple paths to self-discovery and sustained recovery.

We provide programs, services, and a safe, sober environment for people in recovery from drug and alcohol addiction.

We also work to de-stigmatize substance use disorder and alcoholism, and we are very active in our community to build a resilient response to the opioid epidemic.

The Patient Service Center of Burlington

**Champlain
Toxicology Lab**

Science with a Human Element.



- Located in Downtown Burlington
- Same-Day Screens & Next-Day Confirmations
- ColorQ Random Collections Program
- Tele-Collections
- Urine, Oral Fluid & Umbilical Cord Testing
- Integrated Support
- Expanded hours on request
- Daily Couriers

**NOW
OPEN**

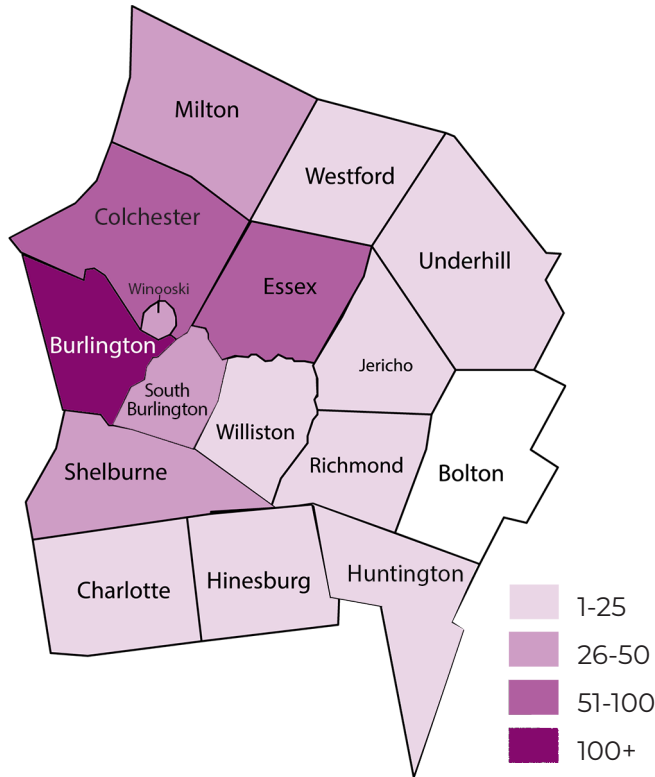
Call Us: 802-542-1100

Open Monday - Friday | 7:00 am to 3:30 pm
179 S. Winooski Ave, Burlington



TPCCC SERVES ALL OF CHITTENDEN COUNTY

Turning Point Center of Chittenden County serves people from all over our region. Recovery coaching, for individuals and families, has no barriers. We offer in-person, phone, and video conferencing options to connect with people. Our services are free, accessible, and on-demand.



Participants from each town in Chittenden County

Burlington 371	Jericho 8	Underhill 2
Charlotte 7	Milton 41	Westford 5
Colchester 60	Richmond 5	Williston 32
Essex 68	Shelburne 27	Winooski 48
Hinesburg 13	S. Burlington 42	*Other 239
Hinesburg 1	St. George 1	

*Other Includes unknown, out-of-county, and out-of-state.



Sana at Stowe is a world-class addiction treatment center in the heart of Vermont offering treatment for **Substance Use Disorders** and **Co-Occurring Mental Health Disorders**.

In network with BlueCross BlueShield, Optum & MVP
MEDICALLY MONITORED DETOX & RESIDENTIAL TREATMENT INCLUDES:

- Withdrawal Management Program
- Daily Provider Visits On-Site
- 24/7 On-Site Nursing
- Integrated programming & psychoeducation clinical groups available during the withdrawal process
- 28-day residential treatment
- 6 hours of integrated clinical programming per day
- Holistic services co-facilitated with clinicians
- Individual, family, and couples counseling sessions
- Farm-to-table prepared meals
- MAT education





Community
BANK

Putting our
communities and
customers first.

cbna.com



Member FDIC




**Laughter
can be the Best Medicine**

Thank you Turning Point Center of
Chittenden County for all you do
in the community.

We are proud to stand “up” with you.

THE
University of Vermont
MEDICAL CENTER

WANT TO VOLUNTEER?

***The Turning Point Center
of Chittenden County is
people-powered!***

When you volunteer, you multiply the benefits the Center offers. Besides helping the Center carry out its profoundly life-affirming work, you have the chance to meet new people and expand your recovery network, and give back to the recovery community.

Call (802) 861-3150 or visit www.turningpointcentervt.org for more information.



rhino
FOODS

**RHINO FOODS IS
PROUD TO SUPPORT
THE TURNING POINT
CENTER AND PEOPLE
IN RECOVERY**

Support the Turning Point Center of Chittenden County

Last year we provided coaching services for 970 individuals and hosted over 9,500 daily visits to the recovery center.

***The need is increasing and
we are meeting the need.***

If you'd like to support us with a financial gift, please visit:

turningpointcentervt.org/donate



RECOVERY COACHING WORKS: LIVES ARE CHANGED FOR THE BETTER

Three years ago, Amanda committed to sobriety and found help at TPCCC.

Today, Amanda is a certified Recovery Coach focused on community outreach and helps others battling addiction within our county's housing systems. Her recovery journey and the support she gives others inspires her to continue

making a difference. Amanda strives daily to build trust and connection with others she encounters in the Center or on the streets through our outreach program. "Trust is key," she emphasizes. "Many individuals battling addiction have been let down or judged in the past. So, I approach each interaction with empathy and understanding, letting them know I've been where they are and how difficult it is to overcome addiction."



Since 2021,
83%

of people who met with a Recovery Coach in the Emergency Department opted for recovery services afterward.

82%

of participants working with a recovery coach throughout 2023 reported an increase in wellness after 60 days.

***Be Part of the Solution!
Give the Gift of Recovery Today!***



**Together, we
can create
brighter futures
for individuals
overcoming
addiction!**



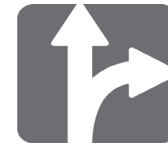


River Rock Treatment

We are partners in the recovery community, and proud supporters of the Turning Point Center of Chittenden County.

River Rock is committed to creating a supportive, impactful and therapeutic community for men and women overcoming substance abuse and mental health disorders.

(888) 308-2624
www.riverrocktreatment.com



Turning Point Center
OF CHITTENDEN COUNTY

BOARD MEMBERS

Maureen Leahy, *President*
Jonathan Goffe, *Vice President*
Eric Sokolowski, *Treasurer*
Rosi Gowdey, *Secretary*
Craig Weatherly, *At-Large*
Bethany Mahler
Cyndi Haselton
Sam Hemingway
Scott Pavek

STAFF OF TPCCC

Tara Campbell, *CRC, Emergency Department Recovery Coach*
Michael Couture, *CRC, Emergency Department Recovery Coach*
Elsa DiGiovanni, *Peer Support Specialist*
Chris Hallowell, *Peer Support Specialist*
Heidi Hausler, *CRC, Director of Parents in Recovery Program*
Christie Holmes, *Director of Marketing & Development*
Laura Howley, *Peer Support Specialist*
Ham Keavany, *Emergency Department Recovery Coach*
Emily Korkosz, *CRC, Director of Coaching Services*
James LaPierre, *Emergency Department Recovery Coach*
Cam Lauf, *CRC, Executive Director*
Mishka Lord, *CRC, Emergency Department Recovery Coach*
Krista Marzewski, *CRC, Emergency Department Recovery Coach*
Laura Paddock, *Emergency Department Recovery Coach*
Amanda Smith, *Recovery Coach Lead*
Timothy Stevens, *Administrative Manager*
Serena Veilleux, *Peer Support Specialist*
Chip Viau, *CRC, Emergency Department Recovery Coach*
Olivia Watson, *CRC, Recovery Coach Lead*

www.HALLAM-ICS.com



Hallam ICS
AN EMPLOYEE OWNED COMPANY

ENGINEERING | CONTROLS INTEGRATION
COMMISSIONING | INDUSTRIAL SAFETY SERVICES

THANK YOU TO OUR GENEROUS SPONSORS!



ACABAY INC.
Premier Office Space



THE
University of Vermont
MEDICAL CENTER



MCS Electric
802-316-9164



River Rock Treatment



Hallam ICS
AN EMPLOYEE OWNED COMPANY



Green Mountain Power
Murphy Sullivan Kronk (MSK) Attorneys
Northfield Savings Bank
Sheehey Furlong & Behm, PC
Working Fields

BlueCross BlueShield of Vermont
Bottom Line Bookkeeping Services, Inc.
La Ruche Beauty LLC.
Nate's Automotive

HOST SPONSOR



PRINT SPONSOR

